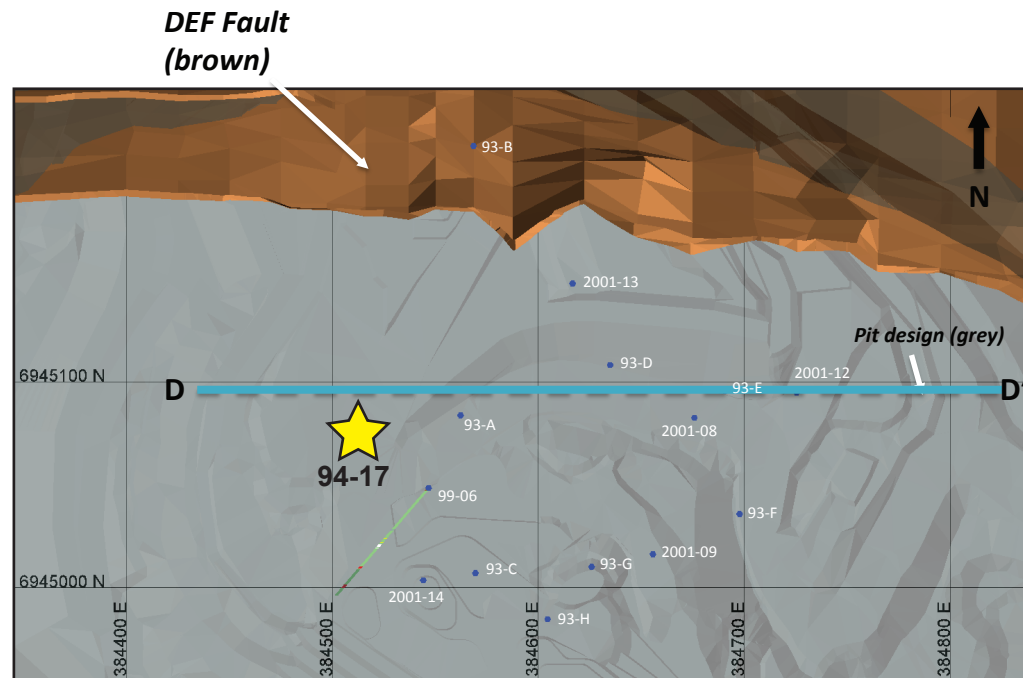


## Minto deposit (Yukon MINFILE 115I 021, 022)

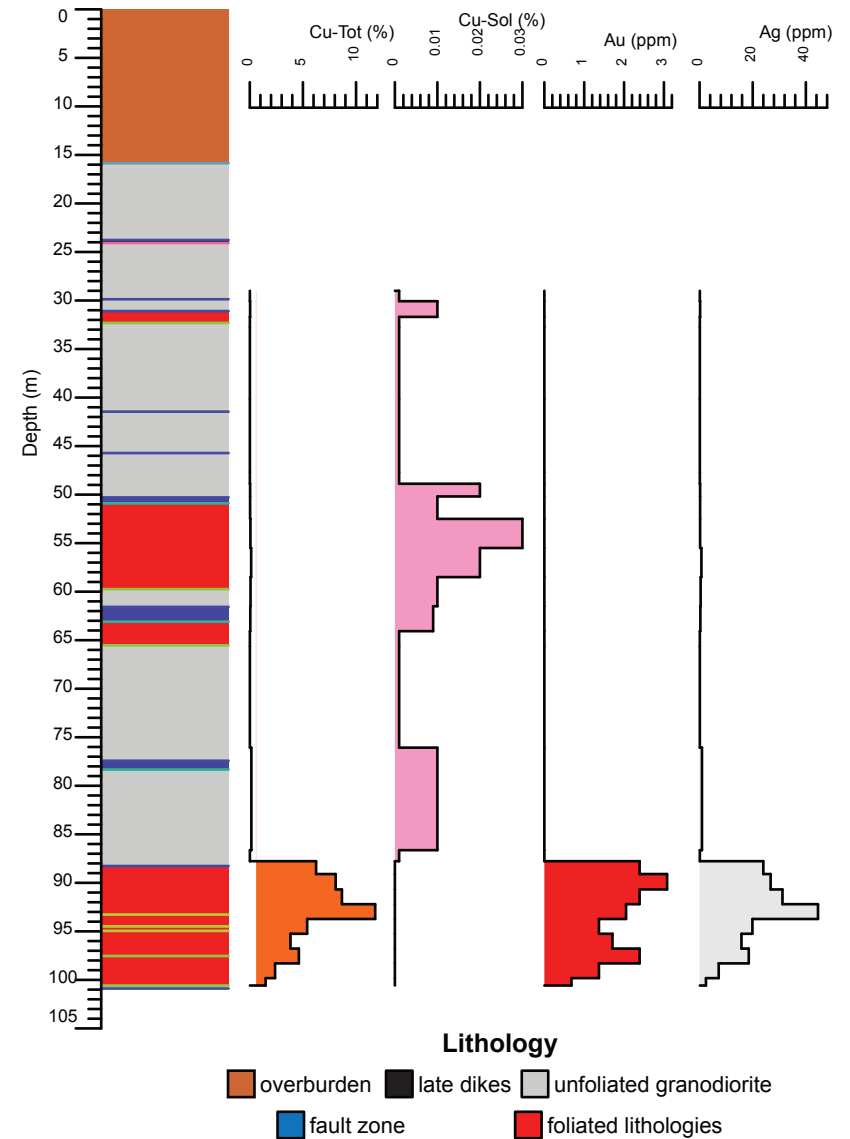
### Drill Hole: 94-17, Minto Main deposit

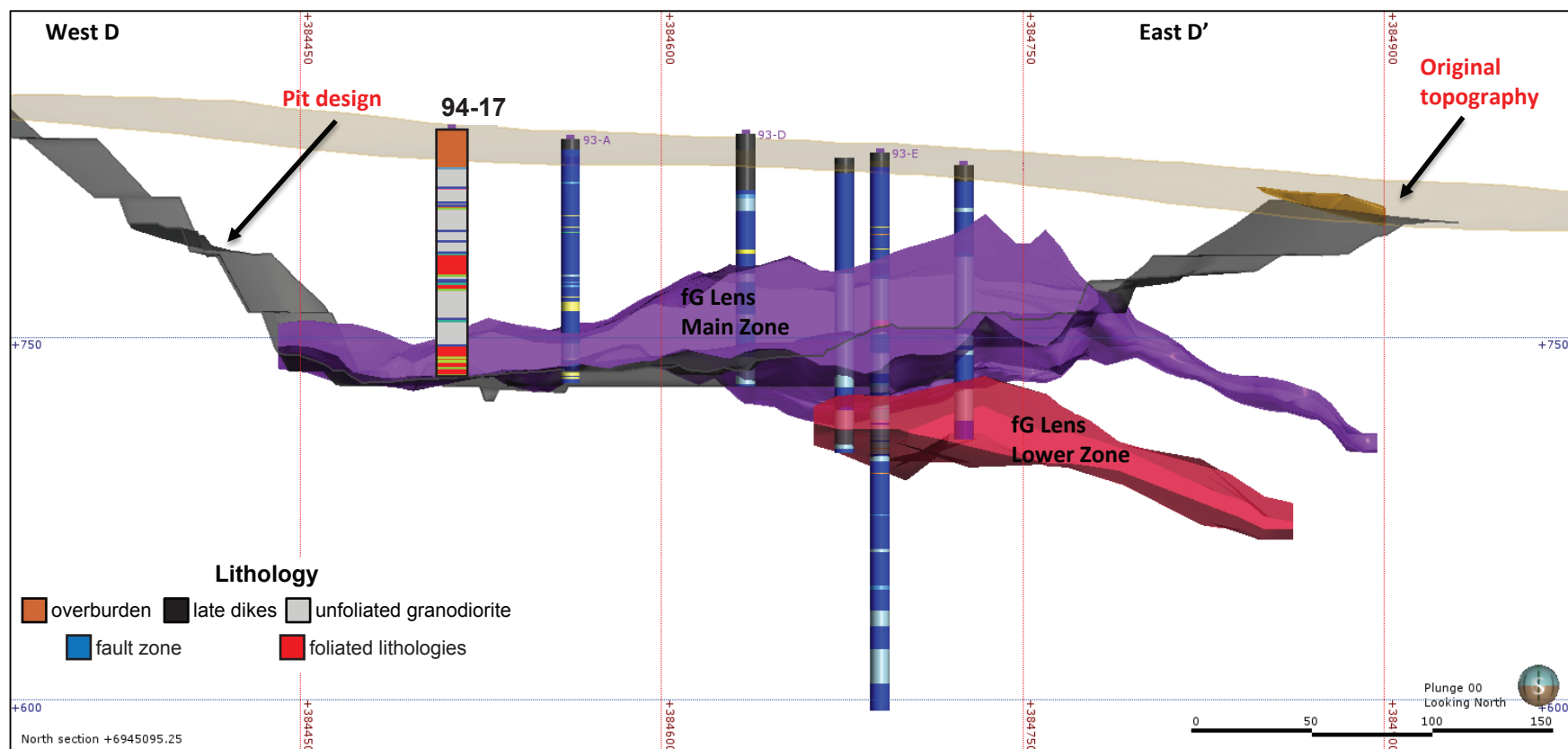
Area	Hole No.	Azimuth	Dip	Length (m)	Collar coordinates (NAD83, Zn 8)
Minto Main	94-17	0	-90	100.89	384512mE, 6945075mN



Above: Orthophoto of Minto area. Collar location of 94-17 shown by yellow star, blue circles show collar locations of other drill holes in YGS collection.

Right: Simplified strip log with selected assays.





Above: Simplified vertical east-west cross-section through the Minto Main pit.

Right: Selected assays through Minto Main lower zone. Cu - Tot = sulphide and non-sulphide copper, Cu-Sol = non-sulphide copper

Hole	From (m)	To (m)	Interval (m)	Sample	Cu (%)	Cu-Sol (%)	Au (ppm)	Ag (ppm)
94-17	87.27	88.27	1	B461065	0.0	0.0	0.0	0.1
94-17	88.27	89.92	1.65	4791	6.2	0.0	2.4	24.0
94-17	89.92	91.44	1.52	4792	8.1	0.0	3.1	26.7
94-17	91.44	92.96	1.52	4793	8.7	0.0	2.4	31.2
94-17	92.96	94.49	1.53	4794	11.8	0.0	2.1	44.6
94-17	94.49	96.01	1.52	4795	5.4	0.0	1.4	19.9
94-17	96.01	97.54	1.53	4796	3.8	0.0	1.7	15.8
94-17	97.54	99.06	1.52	4797	4.6	0.0	2.4	18.5
94-17	99.06	100.58	1.52	4798	2.4	0.0	1.4	7.2
94-17	100.58	100.89	0.31	4799	1.5	0.0	0.7	2.4